

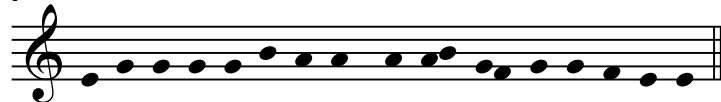
Quadruple & other Alleluias

2c



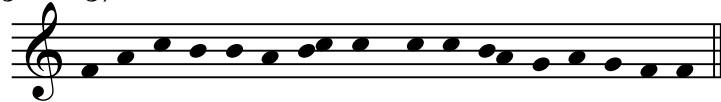
Al-le-lu-ia, al-le-lu-ia, al-le-lu-ia, al-le - lu-ia

4c F 116r



Al-le-lu-ia, al-le-lu-ia, al-le - lu - ia, al-le-lu-ia

5c StM37v



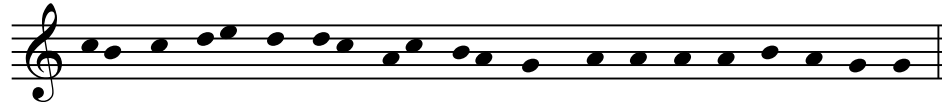
Al-le-lu-ia, al-le-lu - ia, al-le-lu - ia, al-le-lu-ia

6e F114r



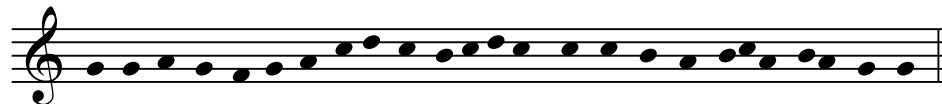
Al-le-lu-ia, al-le-lu - ia, al - le - lu - ia

7c C240v



Al - le-lu - ia, al - le - lu - ia, al-le-lu-ia, al-le-lu-ia

8d F112v



Al-le-lu-ia, al-le-lu - ia, al-le-lu-ia, al - le - lu-ia

M = *Antiphonarium Massilense*. Siglum: F-Pn lat. 1090 Date: 1190+ Provenance: Marseille
<http://www.cantusdatabase.org/source/374050/f-pn-lat-1090>

Mn = München, Bayerische Staatsbibliothek, Clm 4303. Siglum: D-Mbs Clm 4303 Date: 1459 Provenance: Augsburg
<http://www.cantusdatabase.org/source/374104/d-mbs-clm-4303>

StM = Paris, Bibliothèque nationale de France - Département des Manuscrits, lat. 12044. Siglum: F-Pn lat. 12044
Date: 1100s Provenance: St-Maur-F
<http://www.cantusdatabase.org/source/374051/f-pn-lat-12044>

F = Fribourg, Bibliothèque des Cordeliers, 2. Siglum: CH-Fco 2 Date: 1260+ Provenance: Franciscan
<http://www.cantusdatabase.org/source/374095/ch-fco-2>

C = South Bend, Indiana, University of Notre Dame, Siglum: CodLat-B 4 Provenance: Carthusian
http://www.library.nd.edu/rarebooks/digital_projects/bookreader/CodLat_bo4/